

Strategies for Securing Network Access

SASE FORUM PARIS 2025

Diamond Sponsors

GNX

 **EKINOPS**

velocloud[™]
by Broadcom

 **VERSA**

Platinum Sponsor

Gold Sponsor

CATO
NETWORKS

HPE **aruba**
networking

Silver Sponsors

 **CISCO**

 **KEYSIGHT**

CONFERENCE EXHIBITION 25/26/27 MARCH 2025

Strategies for Securing Network Access

The SASE Forum, to be held at the Palais des Congrès de Paris, the 26th of March, will delve into the transformative journey from traditional networking to a Secure Access Service Edge (SASE) architecture.

Experts will explore in particular how AI and machine learning are revolutionizing network automation, troubleshooting, and predictive maintenance, ensuring a seamless and secure transition to the cloud.

They will highlight the different strategies for securing the workforces and explain the concepts of SSE, SASE, and ZTNA and their relevance in this modern era.

Benefits of implementing a Zero Trust approach with SASE from a security and energy's perspective will be demonstrated by discussing the cutting-edge innovations shaping the future of secure access technologies, with a focus on ZTNA and Secure Service Edge (SSE).

- What are the interactions between SASE solutions and the underlay
- Which impact of AI/ML workloads on all layers of connectivity
- How to ensure reliable secure overlays with underlying transport SLAs
- What about security of data and AI training and inference workloads
- What's next with encryption (post-quantum cryptography), intelligent routing, compliance and sovereignty considerations

The SASE Forum will bring detailed responses through renowned technical experts addresses, service providers testimonies and analysts forecast.

CO-LOCATED WITH **MPLS&SRV6AINET** **QUANTUM NETWORKS**
WORLD25 25&26 MARCH 2025

MPLS World: Which New Network Design

Main sessions of the congress will cover AI and ML, IPv6 deployments, Clocking, EVPN, IP/Optical and Open RAN.

For 25 years now, the Congress have highlighted and explained the softwerization,disaggregation and cloudification processes.

Quantum Networks Summit

The conference programme will mainly cover Quantum safe networks software architectures, QKD innovations, Post Quantum Cryptography implementations and control planes aspects.

Other sessions will address photonic layer security, use-cases and migration from legacy networks.

[REGISTER NOW!](#)



PLENARY SESSIONS CONFERENCE ROOM 342

08.00 Registration & Coffee

09.00 INTRODUCTION



Morning Chairman
Amir Zmora, CEO & Co-founder, flexiWAN

09.00 Lessons from the Field

How much of SD-WAN's promise has truly been delivered? Exploring real-world insights into SD-WAN deployments, highlighting successes, gaps, and how the convergence of SSE, SD-WAN, and advanced monitoring is shaping the future.



Adam Godlewski, Solutions Architect SASE, Cavell Group

09.20 KEYNOTES SESSION

09.20



Marc Bouteyre,
Head of Virtualization Solution, Ekinops

09.40



Rick Mur,
CTO & Co-founder, GNX

10.00 Coffee/Exhibition/Networking

10.30 AI IMPACT SESSION

10.30 How Edge AI Changes Enterprise Networking

Using an example of a popular consumer product, looking at how Edge AI changes network requirements for Enterprise, and how solutions like VeloRAIN helps Enterprise adopt the growing demand of AI and GenAI workloads.



Ray Wong, Head of EMEA, VeloCloud by Broadcom

10.50 From Edge to Cloud: How AI-driven SD-WAN Enables the Journey to SASE

Delving into the transformative journey from traditional networking to a Secure Access Service Edge (SASE) architecture. Exploring how AI and machine learning are revolutionizing network automation, troubleshooting, and predictive maintenance, ensuring a seamless and secure transition to the cloud.



Stefano Testa, Sales Director SD-WAN & SASE, EMEA, Cisco

11.10 PANEL SELECTING THE SASE THAT FITS YOUR NEEDS

11.10 Selecting the SASE that Fits Your Needs

The selection of SASE spans various considerations, from the decision to adopt a full SASE solution to a combination of SD-WAN and SSE elements, the required architecture, and "soft" characteristics of the solution.

The panel will review the consideration points for selecting a SASE that fits the needs of different segments.



Moderator
Amir Zmora, CEO & Co-founder, flexiWAN



Gail Smith, Director, Cavell Group



Rick Mur,
CTO & Co-founder, GNX



Hector Avalos, VP Sales Europe, Middle East & Africa, Versa



Jaye Tillson, SD-WAN & Field CTO, HPE

12.00 Finger Buffet

14.00 SASE INFRASTRUCTURES & PERFORMANCE ISSUES



Afternoon Chairman
Gail Smith, Director, Cavell Group

14.00 Securing OT on IT Network

Exploring the critical vulnerabilities within OT environments, associated integration challenges and how SASE can provide a robust, cloud-native solution. Learning how SASE's unified approach to security, remote access, and threat intelligence is reshaping OT security strategies, and how it can help safeguard organization's most vital infrastructure from emerging risks.



Pierre-Henri Bourdiol, Senior System Engineer, Versa

14.20 SASE and Zero Trust: Finding the Balance between Security and Performance

In today's cloud-first, hybrid work-from-anywhere world, there is growing traction towards SASE and Zero Trust architectures to secure and deliver fast access to critical enterprise applications and resources. This shift brings flexibility and agility but introduces complex challenges in network security, performance, and validation.



Dharen Ells, Senior Solutions Architect, Spirent Communications

14.40 Sovereign SASE: Customer Requirements and Solutions

Organizations are seeking cloud-delivered secure access solutions built on a Zero Trust (ZTNA) framework that comply with national regulations while maintaining operational agility. Exploring the key customer requirements driving the adoption of Sovereign SASE and describing FreePro's Unified Sovereign SASE solutions for the French market.

Co-authors: Laurent Cheyssial, CTO of FreePro & Hector Avalos, VP EMEA Telcos at Versa



Laurent Cheyssial, CTO, FreePro

15.00 ZTNA, SSE & SASE: the Next Era of Security Connectivity

Exploring the different strategies for securing our workforce and explaining the concepts of SSE, SASE, and ZTNA and their relevance in this modern era. Highlighting the emerging trends in adoption and their significance.



Jaye Tillson, SD-WAN & Field CTO, HPE

15.20 SASE for Service Providers and Enterprises: How to Do it Right

Exploring how Service Providers and Enterprises can get the SASE experience they need, but can't get through traditional bundled integrations, using a simple metaphor that gets right to the heart of why a SASE Platform, built from the ground up, is essential.



Greg Duffy, Product Marketing Director EMEA, Cato Networks

15.40 Coffee/Exhibition/Networking

16.10 SD-WAN & SASE COEXISTENCE

16.10 Overcoming Network Challenges in AI Deployment: The Role of SD-WAN, SASE, and Proactive Monitoring

SD-WAN and SASE provide the agility and security necessary for AI applications, but their success hinges on proactive monitoring to identify bottlenecks and mitigate failures. By implementing advanced monitoring strategies and leveraging the dynamic capabilities of SD-WAN and SASE, organizations can ensure optimal performance, even in environments with external dependencies.



Nestor Falcon Gonzalez, Global Solution Architect, Network Observability, Broadcom

16.30 Interactions between SASE Solutions and the Underlay

Covering the best practices for managing interactions and leveraging the underlay to enhance SASE deployments. Using real-world examples to provide the knowledge to navigate SASE and underlay integration successfully.



Tayo Ogunseyinde, Consultant System Engineer, Versa

16.50 How to Deploy and Maintain SASE and Secure SD-WAN Solutions

As organizations continue to adopt hybrid work models, there's a rising interest in shifting network security infrastructure to cloud-based services. Exploring the potential benefits and challenges of this emerging trend.



Christian Hirsch, Technology Team Lead, Service Provider EMEA, Keysight

17:10 PANEL SASE, AI, UNDERLAY INTERACTION: SOLVING THE INTEGRATION CONUNDRUM

17.10 SASE, AI, Underlay Interaction: Solving the Integration

- What are the interactions between SASE solutions and the underlay?
- Which impact of AI/ML workloads on all layers of connectivity?
- How to ensure reliable secure overlays with underlying transport SLAs?
- What about security of data and AI training and inference workloads?
- What's next?



Moderator
Gail Smith, Director, Cavell Group



Pierre-Marie Binvel, Global Business Leader, Orange



Alexandre Souillé, CEO, Olfeo



Marc Bouteyre, Head of Virtualization Solution, Ekinops

17.50 End of the Conference

HOTEL BOOKING



Paris' One-and-Only Skyscraper Hotel, 34-storey high, offers spectacular views over Paris and its most beautiful monuments. Fully renovated in 2017, the hotel is ideally located between the business district of La Défense and the Champs-Élysées.

Hyatt Regency Paris-Etoile is situated in central Paris. Directly connected to the Palais des Congrès, one of the largest conference venues in Paris, this business hotel is close to la Défense, the main business district of Paris. Its convenient location near the famous Champs-Élysées offers you a top selection for dining, shopping, and entertainment sites.

Recharge in one of our 995 modern and comfortable rooms and Suites, offering stunning views of Paris and its most beautiful monuments.

Located on the mezzanine floor of the hotel, our spacious fitness club offers state-of-the-art equipment to stay in shape. Open 24/7.

King Bed with High Floor Deluxe

Relax in this 22-square-meter freshly renovated room, featuring one king bed, a work desk area, a sitting area and a bathroom with a walk-in shower. You will also enjoy unique panoramic views of Paris and its monuments.

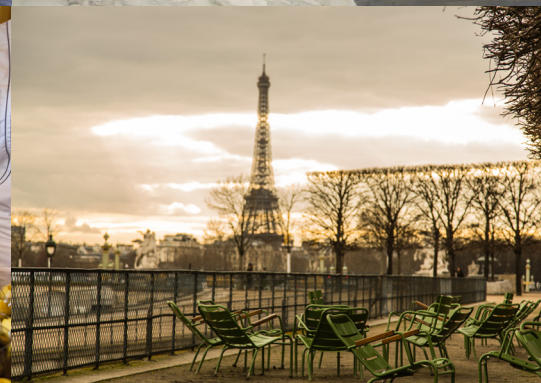
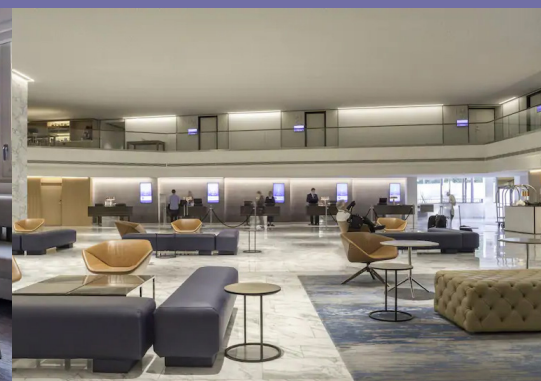
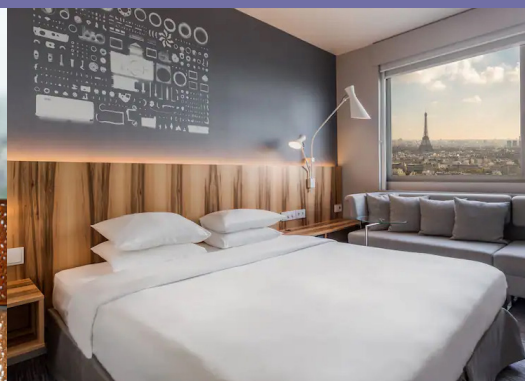
Special Rates € 269/Night

1 breakfast included
Additional guest € 20/Night

Tax (€ 8.45/Day/Guest) not included

To book your room and benefit from this special rate, please click [here](#)

[BOOK YOUR ROOM!](#)



Attendees Registration

Early Bird Fees valid until February 28th

MPLS WORLD + QUANTUM NETWORKS DUAL PASS

Including SASE Forum 2025

Early Bird Fees

1,690 €

MPLS WORLD CONGRESS SINGLE PASS

Including SASE Forum 2025

Early Bird Fees

1,590 €

QUANTUM NETWORKS SUMMIT SINGLE PASS

Including SASE Forum 2025

Early Bird Fees

890 €

SASE FORUM SINGLE PASS PASS

Strategies for Securing Network Access

Early Bird Fees

550 €

EXHIBITION PASS

Exhibition Hall & Interop Showcase

Early Bird Fees

260 €

REGISTER NOW!



BADGE PICK UP

At the event reception desk.

GROUPED REGISTRATION

For grouped registrations, special reductions might be applicable. Please [email us](#)

STUDENTS/ACADEMICS/ANALYSTS

Special registration fees might be applicable. please [email us](#)

SPONSOR'S STAFF

To benefit from special conference registration fees, you must use the link and discount code provided by the person within your company, who is in charge of the event.

If you don't have this special link and code, please [email us](#)

ORGANIZED BY

Upperside Conferences

54 rue du Faubourg Saint Antoine
75012 Paris France

contact@uppersideconferences.com

www.uppersideconferences.com

Telephone: ++33 (0)1 53 46 63 80

VAT ID: FR12 399 004 068

SIRET: 399 004 068 00033

RCS Paris

CANCELLATION POLICIES

Substitution of delegates is permitted at any time and at no extra charge.

Cancellation of a delegate's registration more than 30 days before the event: 100% refund of the registration fees.

Cancellation of a delegate's registration 30 days or less, but more than 14 days, before the event: 80% refund of the registration fees.

Cancellation of a delegate's registration 14 days or less before the event: no refund;

All notice of cancellation must be received in writing via email to contact@uppersideconferences.com.

CONFERENCE PROGRAMME MODIFICATIONS

Upperside reserves the right to make any necessary changes to the program. Every effort will be made to keep presentations and speakers as represented. However, unforeseen circumstances may result in the substitution of a presentation topic or a speaker.

Delegate registration will be 100% refunded if the conference is cancelled by the organizer.